



March 2010

# FROM THE *Hills*

## BOARD OF DIRECTORS \_\_\_\_\_

President	Hornet Thronson
Vice President	Ken Stratford
	Dana Christensen
	John Hapke
	Keri Fowler

## MEMBER COUNT \_\_\_\_\_

Equity Members	325
Non-Equity Members	61
Social Members	58
<b>Memberships for Sale</b>	<b>\$1,000</b>
Non-Equity memberships available.	



## CONTACT INFORMATION \_\_\_\_\_

Ron Malooly General Manager	233.0241
Kevin Brown Assistant Manager	233.0241
Dennis Gibbens Tennis Professional	234.1404
Rick Deacon Golf Professional	233.0269
Dan Harding Grounds Superintendent	232.0101
Fax	233.9886
E-Mail	office@jhcc.us
Web Address	www.jhcc.us

## FROM THE BOARD

**The JHCC annual stockholders meeting will be on Monday, March 8th.** Registration will begin at 6:30 p.m. and the meeting at 7:00 p.m. Please arrive by 6:30 if you have proxies to register.

The Board of Directors will ask approval for four bylaw changes. See the Notice of Annual Meeting for a list of the changes. Detailed changes and explanations can be found on the JHCC website after logging in with your user name (last name) and password (member #, example R2345). You can also request a copy of the detailed changes and explanations from the office.

**There will be two Board of Director positions available this year.** Keri Fowler and Ken Stratford will rerun for their respective positions.

Any three Charter or Regular Members of the club may nominate a different list or lists of candidates, and notify the secretary of their nomination at least seven days prior to the annual meeting. If you are interested in running for the open board positions or would like to serve on a committee, please contact the office.

Remember, if you are a non-equity member and are paying full dues, now is a great time to buy a certificate membership. Contact the office with questions.

### We would like to welcome

John & Jaye Mecham.

### We bid farewell

to Robert & Joyce Hynek, Philip & Barbara Nitse.

## FROM THE CLUBHOUSE

Start making plans for **Easter Brunch on Sunday, April 4th.** We are currently taking reservations. See next month's newsletter for more details. Call for reservations today, 233-0241.

### We are open for lunch and Friday dinners.

Lunch is served Tuesday through Saturday 11 a.m. - 2 p.m. Don't forget we are open for dinner every Friday night. We have several entrees with great prices. Enjoy Friday dinner with your friends. The food is great, the service is perfect and the view is wonderful. Friday dinner hours are from 6 - 9 p.m. Bar hours are from 10 a.m. - 9 p.m. except Fridays, when the bar and clubhouse will close at 11 p.m. The bar may close early if there is not enough business to warrant staying open.

We will be running the same gift certificate promotion as we did in February. If you come to lunch during March and bring a guest, you can receive a free tennis pass. Bring two guests for lunch (at least three people total) and receive a golf pass or two tennis passes. No kidding, tennis or golf. You can even bring your spouse as one of the guests for lunch and receive this great offer. Better yet, bring your spouse and two guests and receive two passes. Certain restrictions do apply. Call for details.

We will be working on the new member address directory this month. Please send in any changes you would like on your listing. If you would like your e-mail address included in the Member Address

Book, please e-mail the club at office@jhcc.us with "Address Book" as the reference.

**Your kids will LOVE all the excitement at our annual Easter Brunch! Call for reservations today.**





## Make your plans for **Easter Brunch** **Sunday, April 4th.**

This event is always a sell-out.. See next month's newsletter for more details or call for reservations, 233-0241.



## FROM THE GROUNDS

The snow is beginning to melt and we can actually see quite a bit of grass peeking through. We are monitoring all of the greens for ice and will continue to do so until all of the ice has melted or been removed. The freezing and thawing of the ice can severely damage the turf. We let nature take its course and melt the snow, but any ice that forms will be removed to prevent any damage or loss of turf down the road. It is also very important to stay off the greens this time of year even if there is no snow on the greens. They will be very soft and soggy on the surface until the frost layer in the ground is gone.

Once the snow does melt, we ask that if you have to play, that you use the temporary greens and tees on the back nine only. Carts are still prohibited until the golf course opens.

If you happen to see a cart or utility vehicle, it will be one of us at the maintenance department working on getting the course ready to open. We hope to have the golf course open as soon as possible this spring. We will sweep the entire course one more time to pick up any sticks and leaves that we didn't get to before the snow came last fall. We are also planning on building another tee box this spring as soon as the ground dries out and we can get the equipment on site. Weather permitting; we will also bring in some of the summer crew during spring break to get a head start on some of the maintenance projects for the year. We will try to keep the disruption of play to a minimal while construction is going on. We are looking for another great season at JHCC. If there is anything that we can do for you, don't hesitate to ask.

Thanks,  
Dan Harding, CGCS



If anyone is interested in having their golf cart serviced for the coming season, you can contact David Niehans at 221-3299.

Can't wait to see those beautiful flowers in bloom.

## Your Friends Need to Know... *Check out our New Member Promotion*

If you sponsor a new member, you can receive a big discount on your membership dues. Let your friends know now is the time to join. Check out our website for details on our 2010 new membership incentive.  
**www.jhcc.us**



## FROM THE GOLF SHOP

The Pro Shop and golf course will open as soon as weather permits.

We received notice this month that the IGA handicap dues will increase from \$25 to \$30. You will see this new rate reflected in your March 1 statements.





## CLUB CLASSIFIEDS

### EXPRESS EMPLOYMENT PROFESSIONALS PRESENTS:

#### Lessons Learned from the Top 10 Leadership Mistakes

Thursday, March 25 at the club.

7:30 registration, Cost is \$30.00

Open to all club members (includes lunch)

RSVP by March 15th to 232-1040 or

Karen at: perkins@expresspros.com.

## FROM THE COURTS

Greetings,

The **Spring Mixed Double** season is in full swing. Matches began in February and will continue into April.

If you are interested in playing the **USTA Adult Season**, beginning in May, and do not have a team please call 234-1404 and I will point you in the right direction.

Susan and I will be attending the Pro Tennis Tournament in Indian Wells March 10th through March 16th. It's always a great tournament and a good time to visit Indian Wells and thaw out.

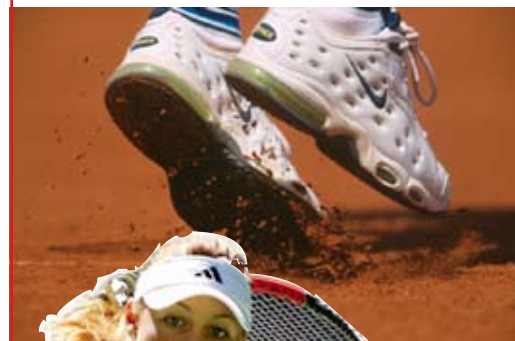
Spring is right around the corner and everyone is excited to be outside playing tennis.

Thanks,

Dennis



This years **Nike Adult Tennis Camp** is scheduled for April 16th through the 18th. If you are interested in attending, let me know and I will help you get registered.



Sunday	Monday	Tuesday	Wednesday	Thursday	Friday	Saturday
<b>2010 March Tennis Schedule</b>		2 Pee Wee 4-5 Group 1 5-6 4.0 Ladies 6-7:30 3.5 Ladies 7:30-9	3 Ladies 3.5 9-10:30 Ladies 4.0/4.5 5-6:30 Mens Night 6:30-8:30	4 Ladies 3.0 5:30-7	5 Ladies 3.5 9-10:30 <b>PRIME FRIDAY</b>	6 Int Adult 8-10 Adv Adult 10-12 3.0 Adult 12-1:30 Highschool 1:30-3 Jr High 3-4:30
7	8 Ladies 2.5 6-7:30 3.0/3.5 Adult 7:30	9 Pee Wee 4-5 Group 1 5-6 4.0 Ladies 6-7:30 3.5 Ladies 7:30-9	10 Indian Wells	11 Indian Wells	12 Indian Wells <b>PRIME FRIDAY</b>	13 Indian Wells
14 Indian Wells	15 Indian Wells	16 Indian Wells	17 Ladies 3.5 9-10:30 Ladies 4.0/4.5 5-6:30 Mens Night 6:30-8:30	18 Ladies 3.0 5:30-7	19 Ladies 3.5 9-10:30 <b>PRIME FRIDAY</b>	20 Int Adult 8-10 Adv Adult 10-12 3.0 Adult 12-1:30 Highschool 1:30-3 Jr High 3-4:30
21	22 Ladies 2.5 6-7:30 3.0/3.5 Adult 7:30	23 Pee Wee 4-5 Group 1 5-6 4.0 Ladies 6-7:30 3.5 Ladies 7:30-9	24 Ladies 3.5 9-10:30 Ladies 4.0/4.5 5-6:30 Mens Night 6:30-8:30	25 Ladies 3.0 5:30-7	26 Ladies 3.5 9-10:30 <b>PRIME FRIDAY</b>	27 Int Adult 8-10 Adv Adult 10-12 3.0 Adult 12-1:30 Highschool 1:30-3 Jr High 3-4:30
28	29 Ladies 2.5 6-7:30 3.0/3.5 Adult 7:30	30 Pee Wee 4-5 Group 1 5-6 4.0 Ladies 6-7:30 3.5 Ladies 7:30-9	31 Ladies 3.5 9-10:30 Ladies 4.0/4.5 5-6:30 Mens Night 6:30-8:30			



6600 Bannock Highway  
Pocatello, Idaho 83204

### MEMBER INFORMATION

Dining Room	<i>Lunch</i>	<b>Tuesday - Saturday</b> 11:00 AM - 2:00 PM
	<i>Dinner</i>	<b>Friday</b> 6:00 - 9:00 PM
Clubhouse		9:00 - 9:00 PM
Pro Shop		<i>(see office)</i>
Tennis Court		8:00 - 9:00 PM
Swimming Pool		<i>Closed for the season</i>

### CONTACT INFORMATION

*p* 208.233.0241  
*f* 208.233.9886